

# MONTHLY MEMBERSHIP PROGRESS REPORT

District 202 D

Results as of: 6/30/2024

GMT:

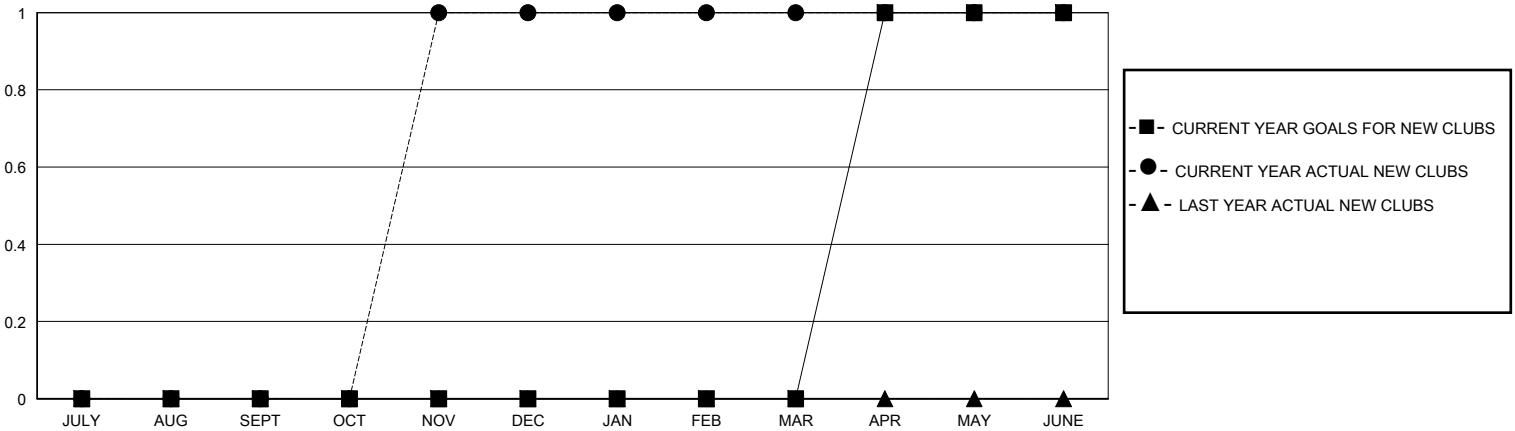
LOCATION NEW ZEALAND

GMT CA

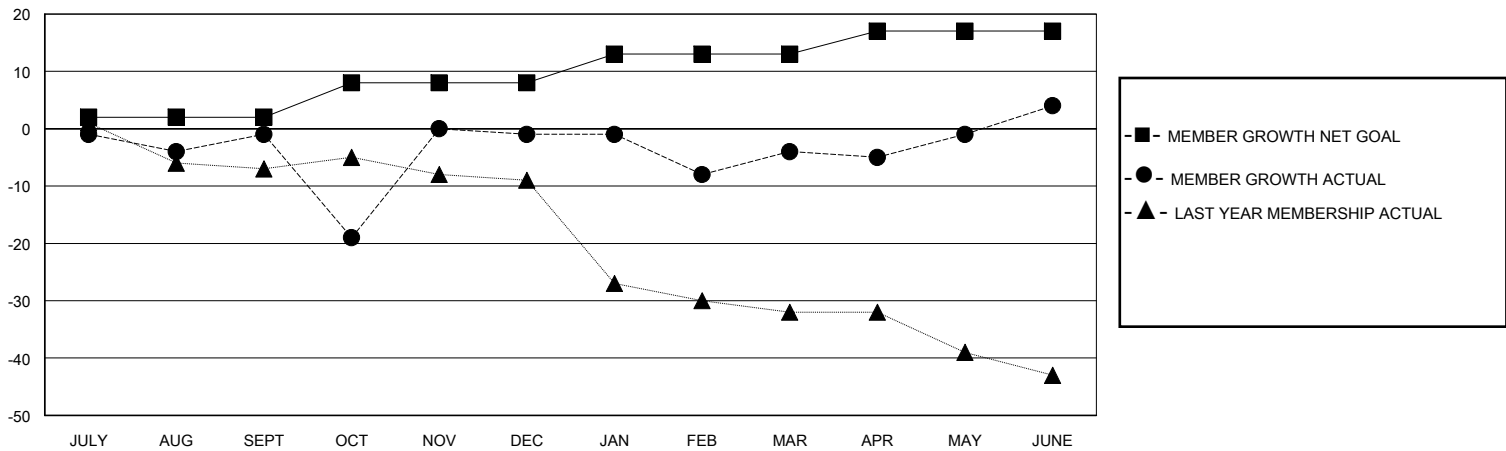
Clubs			
RESULTS FOR 2023-2024			
QUARTER	NEW CLUB GOAL	NEW CLUBS	DROPPED CLUBS
JULY/AUG/SEPT	0	0	0
OCT/NOV/DEC	0	1	1
JAN/FEB/MAR	0	0	0
APR/MAY/JUNE	1	0	0

Members			
RESULTS FOR 2023-2024			
QUARTER	MEMBER GROWTH NET GOAL	MEMBER GROWTH ACTUAL	DROPPED MEMBERS ACTUAL (including transfers)
JULY/AUG/SEPT	2	24	22
OCT/NOV/DEC	6	42	40
JAN/FEB/MAR	5	13	14
APR/MAY/JUNE	4	35	24

GOALS AND ACTUAL NEW CLUBS CUMULATIVE



GOALS AND ACTUAL MEMBERS CUMULATIVE



DROPPED CLUBS: 1

26 CLUBS OF 34 ADDED 1 OR MORE NEW MEMBERS

GENDER DISTRIBUTION

MALE 662 (68.46%)  
FEMALE 305 (31.54%)

DROPPED MEMBERS

DECEASED	15
CLUB CANCELLED	0
OTHER	84
<b>TOTAL</b>	<b>99</b>

[CLICK HERE FOR CUMULATIVE MEMBERSHIP DATA](#)

TOTAL FAMILY UNIT MEMBERS	115
FAMILY MEMBERS PAYING HALF DUES	58